

# Battswap NC 4.3











# A Simple, Versatile and Lightweight Micro Vehicle Platform with High Payload Capacity

**The Battswap Nextem Orca is an all-electric, zero-emission light commercial utility vehicle designed for optimal performance and efficiency.** Fully road-homologated to N1, the Orca is the perfect solution for a wide range of public and private applications. With an impressive payload capacity of up to 1000kg and the innovative Battswap technology, it offers seamless battery swapping for maximum uptime. **A smart solution for businesses transitioning to electric fleets.**

# Environmentally friendly



## 100% Electric, Zero Emissions

Fully compliant with Low and Ultra-Low Emission Zones in urban environments.



## Silent Operation

Enables night-time and early morning use without noise pollution.



## Sustainable Design

Contributing to cleaner cities and reduced carbon footprints.

# Road Legal



## Road homologation N1

Homologated to N1 standards and eligible for road registration (zero-rated), making it fully legal for use on public highways.















# Performance



## Battswap Technology

Enables rapid battery swapping for continuous operation without downtime.  
Quick battery swapping takes only **3 minutes**.



## Electric drive

Equipped with a high-efficiency electric drivetrain, delivering a top speed of up to **85 km/h**.



## Range distance

Orca offers a comfortable range of up to **120 km**.



## Cargo space

Depending on the type of body, **3—5m<sup>3</sup>** can be transported.



## Payload Capacit

The new Orca model will carry up to **1000 kg** of cargo to its destination.

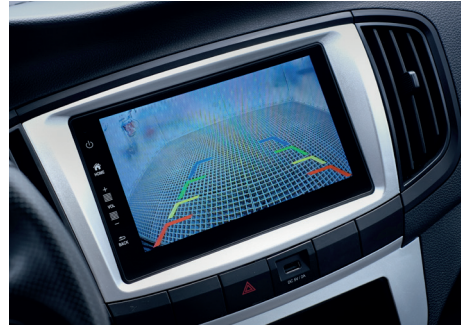


# Standard equipment



## High-definition OLED colour display

The OLED display ensures superior visibility and clarity, providing real-time vehicle data with enhanced contrast and vibrant colors.



## Rear camera

The rear camera enhances visibility and safety by providing a clear view of the area behind the vehicle. It assists with parking, maneuvering in tight spaces, and minimizing blind spots.



## Power windows

Quick and easy opening of windows on both sides of the cabin.



## Automatic daylight sensor

Daylight sensor is detecting ambient light levels and adjusting the vehicle's lighting accordingly. This ensures optimal visibility at all times while reducing the need for manual adjustments.



## Central locking of the cargo area

The central locking system allows all cargo doors to be locked and unlocked simultaneously. This feature helps protect valuable goods while simplifying access for efficient loading and unloading.



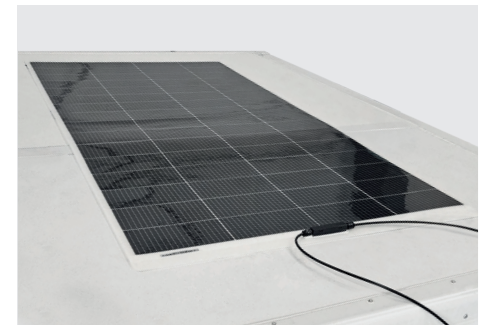
## Full LED lights

Full LED lights provide superior illumination, enhancing visibility and safety in all driving conditions. They offer improved energy efficiency and longer lifespan.



## Enhanced Comfort with Optimized Suspension

The vehicle features a refined suspension system with softer springs, ensuring a smoother ride and reducing vibrations. This upgrade significantly improves driver comfort.



## Integrated Solar Power for Greater Energy Efficiency

The cargo box is equipped with an advanced active solar power system, capturing and utilizing solar energy to enhance overall vehicle efficiency. This feature extends operational range.











# Standard body options

Customizable chassis adaptable for a wide range of applications and industries supports specialized equipment such as refrigerated bodies, street cleaning units, and many more.



COOLING VAN BODY



VAN BODY



HIGH VAN BODY



HIGH TIP WASTE BODY



PICK-UP TIPPER BODY



PICK-UP CAGE BODY





# New dry&cooling body

We have developed a completely new dry&cooling body. The newly designed sliding doors on both sides of body allow for unloading the load even when parking in a narrow space. The rear part of the body allows for cooling/freezing of goods to a preset temperature. The cooling system is part of the body and is fully autonomous.

Optional -18°C freezer compartment



**18 boxes  
in the dry section**



**96 paper  
shopping bags**



**6 boxes in the  
cooling section**



**36 paper  
shopping bags**



# The future of last-mile delivery is here

## Revolutionizing Efficiency with Unmatched Technology.

Designed for the new era of urban logistics, our cutting-edge electric delivery vehicle redefines efficiency, uptime, and automation. With groundbreaking features tailored for modern delivery needs, we eliminate downtime, maximize operational capacity, and drive the future of logistics—seamless, smart, and unstoppable.

### Impact-Proof Front Built for the Urban Jungle.

A reinforced bumper with soft-rubber steel bars absorbs minor impacts, protecting both the vehicle and its surroundings. Full LED headlights enhance visibility in dark city streets, minimizing accidents, repair costs, and ensuring continuous operation.

### Ultra-Fast Battery Swap Limitless Operation.

Our advanced battery swap system gets you back on the road in just 3 minutes—no charging delays, no range anxiety. Designed for high-energy efficiency, it requires just 1/10th of the grid power of traditional charging. Scale your fleet without limitations and unlock the true potential of electric last-mile logistics.

### Autonomous Hub Unmanned Precision.

The integrated LiDAR & camera system enables fully autonomous operation around the swap station and warehouse zones—eliminating human errors, increasing reliability, and ensuring uninterrupted fleet movement. No downtime for drivers, no wasted minutes—pure efficiency at every step.

### Data Intelligence Smart Fleet Optimization.

Every vehicle is a moving data hub—sending live diagnostics, cargo temperature tracking, performance analytics, and driver behavior insights. Remote updates and predictive maintenance keep operations smooth and future-proof your fleet.

### Swappable Cargo Box The Ultimate Productivity Boost.

Eliminate warehouse waiting times—instantly switch to a pre-loaded, temperature-controlled cargo box. Keep deliveries moving while optimizing fleet flexibility for diverse logistics needs, from groceries to general supplies. A game-changer for last-mile efficiency.

### Smart Cargo Box Engineered for Next-Gen Logistics.

A modular cargo space optimized for grocery delivery—integrating dry, chilled, and frozen sections. Designed for automated warehouses and standardized crate systems, it features roof solar panels for energy efficiency and onboard electronics support.

### Courier-First Design Faster, Safer, Smarter.

Dual sliding side doors prevent street-side accidents and optimize loading/unloading speed. A separate rear door ensures cold chain integrity. Central locking, door alarms, LED interior lighting, and an HD parking camera boost safety, security, and efficiency.





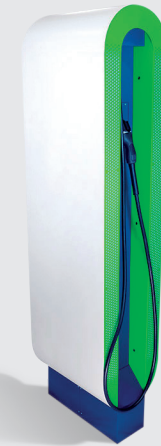
# Grow like never before with no investment



Watch the video  
of charging



# VS



## Battswap power station - 100 kW POWER



3 min 100% state of charge



CAPEX 0 €



Serving capacity fleet of 25 vehicles



1 hour 80% state of charge



CAPEX 10.000 € / charger



Serving capacity 1 vehicle



# Photo gallery from real operation





# Technical data of BattSwap NC 4.3

<b>BATTERY</b>	Battery type		LFP Lithium
	Battery size	(kWh)	25
	Homologation		N1
<b>WEIGHTS</b>	Gross Vehicle Weight	(kg)	2245
	Kerb weight	(kg)	1450
	Payload capacity	(kg)	795
	Gross payload capacity (includes 85kg for the driver)	(kg)	710
	Volume	(m3)	4,4
<b>BATTERIES AND POWER SUPPLY</b>	Battery voltage / nominal capacity	(V) / (a)	144 / 173
	Battery swap time	(mins)	3
	Supply AC	type / (a)	3phase / 12
	Recharge time in-built	(hours)	3,5
	Supply AC		230v single
	Current draw	(a)	24
	Auxiliary battery	(V) / (a)	12 / 45
<b>PERFORMANCE</b>	Max peak power / Nominal power	(kW)	16 / 30
	Torque @ max peak power / Max torque @ 0 rpm	(Nm)	75 / 80
	Max speed flat road	(km/h)	85
	Range (all season real scenario)	(kms)	100
	Maximum gradient Unladen / Laden	(%)	25 / 17
	Approach angle	(°)	20
	External turning radius wall to wall	(mm)	4600
	Noise level moving	dB(A)	66



<b>TYRES</b>	All season 175/75 R14
	Winter 175/80 R14
	Steel rim R14
	Light alloys heavy duty rim R14
<b>CAB</b>	Polypropylene bumpers
	Central locking
	Power windows
	Electric front wiper and screen wash
	Electric cabin heater
	Heater extension feet
	Exterior mirrors
	Interior light
	Glove compartment
	Radio / BT connectivity
	USB charging bay
	Rear top mounted camera with display
	Bottle holder
	Smart phone holder
<b>SEATING</b>	Adjustable driver and passenger seat
	Padded adjustable headrest
	3point inertia seat belts
	Enhanced comfort for higher drivers

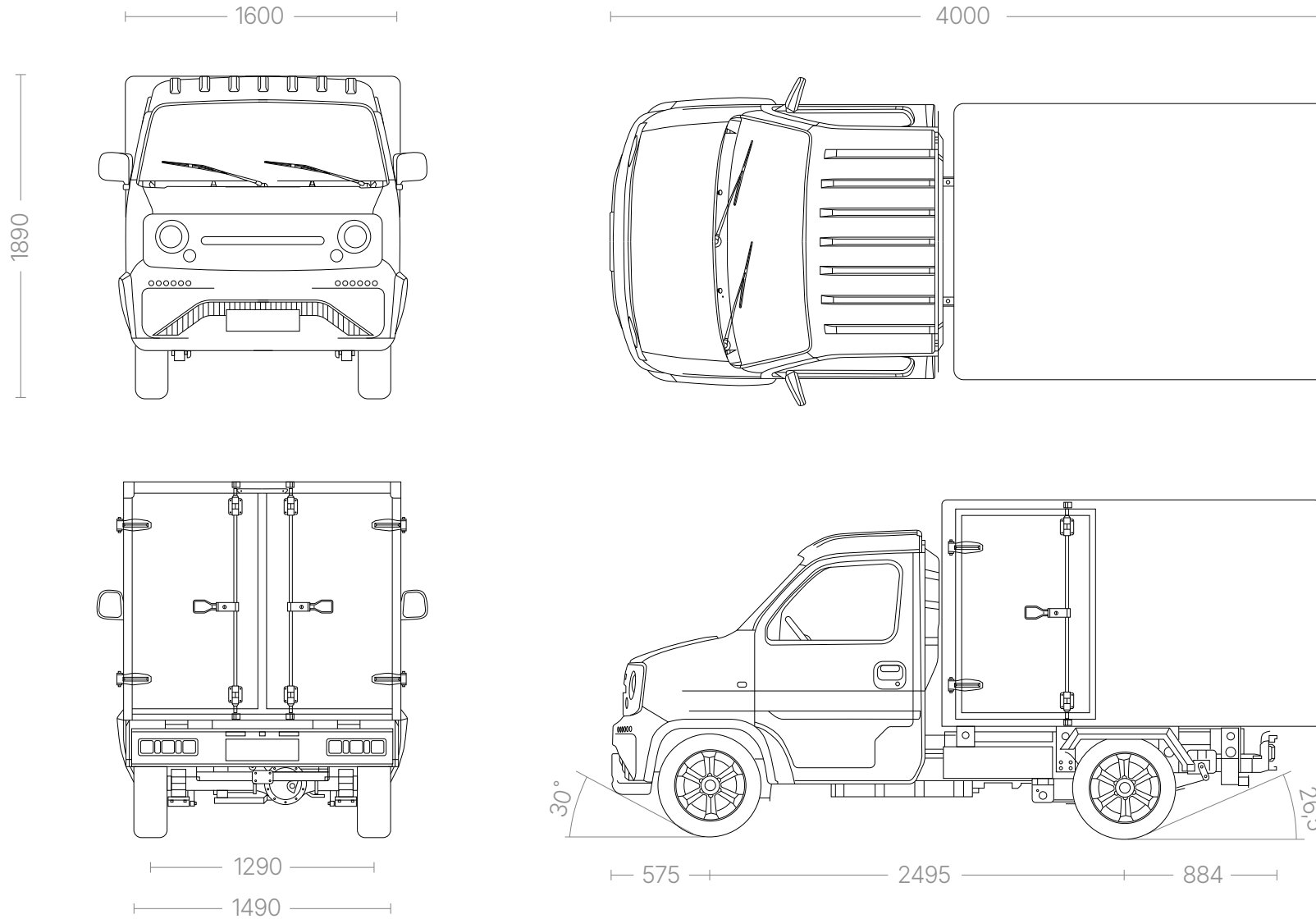
<b>COMFORT</b>	Soft front axle springs - new suspension
	Driver Airbag
	LED head lights
	LED day lights
	Proximity sensors front and rear
	Beeper for reverse motion
<b>BODY</b>	Box Van Combined Last Mile Delivery
	Dry freight / Cooled freight
	Racks with anti-slip floor
	Both sides sliding door Dry freight
	Rear doors insulated Cooled freight
	Inbuilt lightning
	Open door indication
	Central locking
	Active cooling unit 2-5°C

# Highlights of new BattSwap NC 4.3

<b>BOX</b>	Modified cargo box opening	Sliding doors on both sides, cooling department accessible from the rear side
	Additional lighting in the cargo area	Interior lighting will be installed to improve visibility inside the cargo space.
	Cargo door open alert	A warning system will be added to notify the driver if the cargo doors are not properly closed.
	Central locking for cargo area	The cargo space will now be equipped with a central locking system.
	Anti-slip protection for the cargo floor	Anti-slip tapes will be applied to the cargo area floor for improved safety.
	Cargo box shelf modifications	Higher durability for heavier cargo - strenghtening of the structural architecture
	Entire cargo box easily swappable	Readines to swap the entire cargo box - relocation of the cooling unit into the box
<b>COMFORT</b>	Driver's seat improvement	The seat will be positioned 5 cm lower than in the current model, and its cushioning will be enhanced for better comfort.
	Heating system upgrade	The heating source and air distribution system will be improved, and an air vent for foot heating will be added.
	Camera repositioning	The rear camera will be moved to the top edge of the cargo box (currently, it is positioned at the bottom, which affects visibility).
	Additional proximity sensors	New sensors will be installed in the rear part of the vehicle.
	Upgraded side mirrors	The vehicles will be fitted with larger and higher-quality mirrors for improved visibility.
	Phone charging socket	A standard 12V "cigarette lighter" socket will be added so couriers can charge their devices (phones, terminals) during trips.
	Infotainment system enhancement	The display brightness will be adjustable for better usability.
<b>DRIVE</b>	Vehicle suspension upgrade	The vehicles will be equipped with a completely new and improved suspension system to enhance ride comfort.
	Battery frame modification	The battery locking mechanism will be adjusted to prevent the entire station from stopping in case of failure. Instead, only the affected vehicle will be taken out of service, reducing operational impact.
	Light alloy heavy duty rims R14	Higher resistance against damages when hitting the pothole or curb



# Dimensions BattSwap NC 4.3







[www.battswap.com](http://www.battswap.com)

 +420 608 960 269  [info@battswap.com](mailto:info@battswap.com)

 USA - San Francisco  
181 2nd street, CA 94105

 EU - Germany  
Äußere Sulzbacher Str. 118, Nürnberg

 CHINA - Zhejiang  
12 Qihui Rd., Haining City



Please be advised that all information and graphics contained within this product leaflet are provided for illustrative purposes only. They are not intended to be binding or constitute contractual obligations. Any reliance placed on this information is at the user's own risk. For specific contractual terms and details, please refer to the official agreement or documentation provided by the company